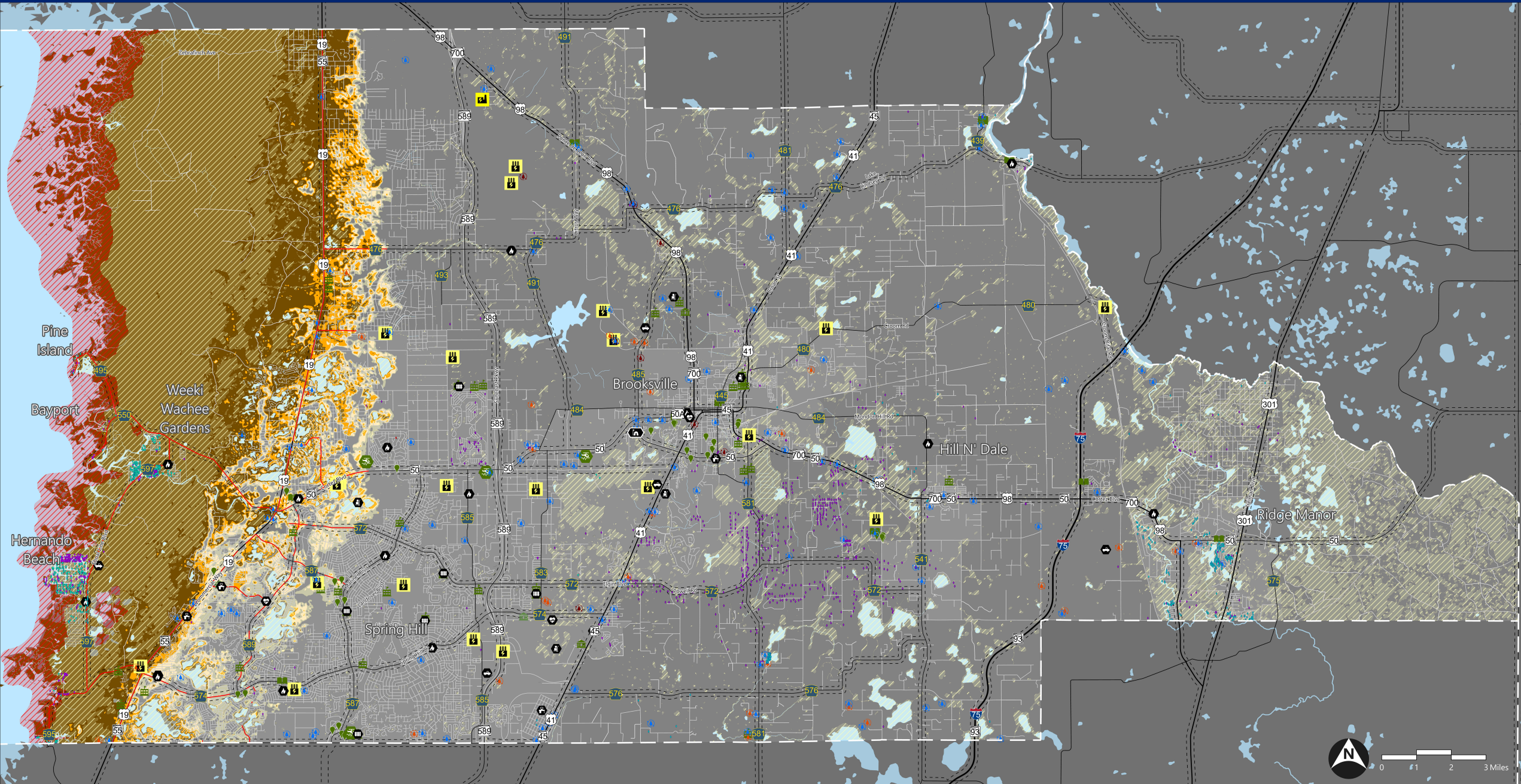




Tampa Bay Region

POST-DISASTER REDEVELOPMENT

Hernando County Vulnerabilities & Resources



FEMA Special Flood Hazard Areas

- A Zones (1% annual chance of flooding)
- VE (Coastal Areas)

2024 Storm Damage

- Hurricane Helene (Flood)
- Hurricane Helene (Wind)
- Hurricane Milton (Flood)
- Hurricane Milton (Wind)
- Hurricane Milton (Fire)

Modeled Category 5 Storm Surge

- 16' - 21' Surge
- 11' - 15' Surge
- 6' - 10' Surge
- 1' - 5' Surge
- Surge Vulnerable Roadways

Critical Infrastructure

- Water Supply Facilities
- Domestic Wastewater Facility
- Industrial Wastewater Facility
- Designated Evacuation Routes
- Electric Substations
- Power Plant

Community Facilities

- Hospitals
- Schools
- Community Centers
- Affordable Public Housing
- Government Facilities

Critical Emergency Facilities

- Emergency Operation Centers
- Logistical Staging Areas
- Shelters (Schools)
- Disaster Recovery Centers
- Fire Stations
- Debris Management Sites
- Emergency Medical Service